

iSky-30HD

Surveillance System for Airborne Missions



The iSky-30HD is a member of the iSky family of compact observation systems that were especially designed for the challenging airborne environment.

The iSky systems provide maximum sensor range performance by using highly sensitive sensors, gyro-stabilization and unique video enhancement algorithms.

CONTROP's iSky family of EO/IR systems offer a full solution for military and law enforcement airborne operational requirements.

Applications

Search & Rescue
Border Surveillance
Law Enforcement
Force Protection
Maritime Patrol
Special Operations

Technical info:

KG	21kg
Ø	305mm
KM	18km

 Thermal Imaging detection range to NATO target

CONTROP
Turning Vision Into Reality

iSky-30HD

Surveillance System for Airborne Missions

CONTROP
Turning Vision Into Reality

Features

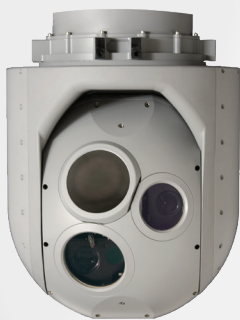
- Superior Gyro-stabilized Image
- Multi-Spectral Imaging
- Advanced Image Processing
- Lightweight and Compact Design
- Airborne Qualified
- Integrated with Aircraft's Systems

Optional

- Eyesafe Laser Range Finder (LRF)
- Laser Pointer
- Control Unit (CU)
- Airborne Video Displays
- Digital Video Recorder (DVR)
- Mission Computer with Moving Map Software

Image Processing

- Local AGC
- Video Enhancement
- Automatic Target Tracker



Display



Control Unit



Downlink



Mission
Computer



DVR

Electro-Mechanical

Type:	3 Gimbal Gyro-stabilized System
Field of Regard:	Azimuth: 360° x N (continuous) Elevation: +30° to -105°
Angular Velocity:	Azimuth / Elevation: 60° / Sec (max)

Thermal Imaging (TI) Sensor

Spectral Range:	3.0 - 5.0 μ m
Detector:	FPA 640x512 InSb
Lens:	Zoom X12.5
Field of View:	Widest Narrowest (optical) x3 Elect. Zoom 27° x 21° to 2.2° x 1.7° to 0.73° x 0.55°

Full HD Daylight Channel

Camera:	Color Full HD 1920x1080 pixels
Lens:	Zoom X22
Field of View:	Widest Narrowest x3 Elect. Zoom 50° x 28° to 2.3° x 1.3° to 0.8° x 0.45°

Laser Rangefinder (optional)

Type:	Eyesafe, Class 1
Wavelength:	1.54 μ m
Range:	75 – 20,000 m

Laser Pointer (optional)

Wavelength:	0.8 μ m
-------------	-------------

Physical Characteristics

Weight (Turret):	21kg (46.3lb)
Dimensions (Turret):	(\varnothing)305mm (12") x (H)430mm (17")
PEB:	3.8 kg (8.9lb) (optional 1.5 Kg)
Control Unit:	1.5 kg (3.3lb)

Electrical Interface

Voltage:	28 VDC
Power Consumption:	70 Watt (nominal)
Video Outputs:	HD-SDI (1080p) and PAL

Environmental Conditions

Temperature:	-32 C to +55 C
--------------	----------------

CONTROP reserves the right to change specifications without prior notice